



# **User Guide Standards**

---

**E Ink Luvia Evaluation Kit for  
28" (VB3300-PHA) EPD**



# Table of Contents

<b>1</b>	<b>Introduction .....</b>	<b>1</b>
(1)	Luvia evaluation kit.....	1
(2)	28 inch monochrome ePaper display .....	2
<b>2</b>	<b>Hardware Setup Guide .....</b>	<b>2</b>
(1)	Hardware requirements for drive 28” monochrome ePaper display ...	2
(2)	Table 1 Minimum PC Requirements (Prepare by customer) .....	3
(3)	Connect method of Luvia kit with 28” monochrome ePaper display ...	3
<b>3</b>	<b>How to Demo the Picture .....</b>	<b>4</b>
(1)	Recommend picture format .....	4
(2)	Operating procedures.....	4
<b>4</b>	<b>Troubleshooting .....</b>	<b>11</b>
<b>5</b>	<b>Legal Information .....</b>	<b>11</b>

# 1 Introduction

Luvia evaluation kit support to highlight the features and benefits of the ePaper display driven by LVDS interface. This document will provide details on how to operate the Luvia evaluation kit with 28" monochrome LVDS interface panel. Please make sure if you already prepare following components on hand before starting to operate.

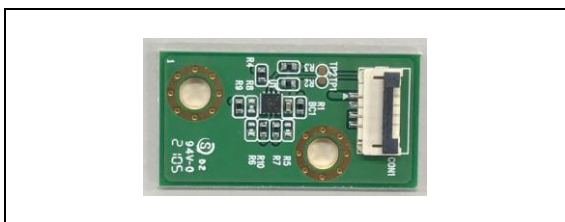
## (1) Luvia evaluation kit



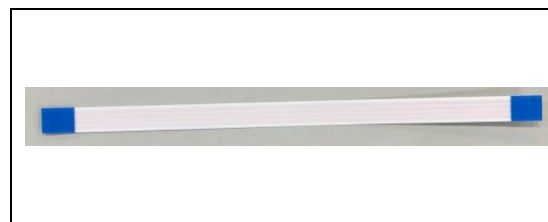
LT-1000 timing control board×1



FFC cable×2



Temperature sensor board×1

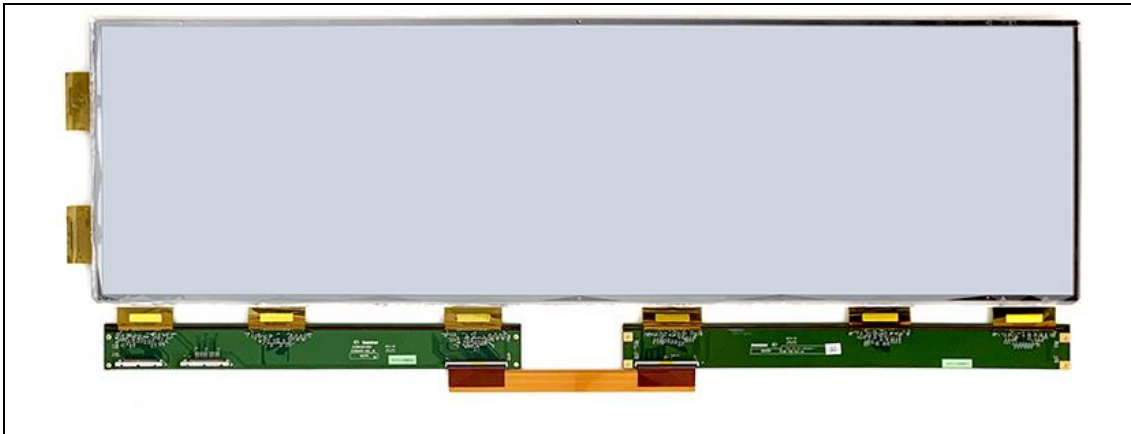


Cable for temperature sensor board



Power adaptor×1

## (2) 28 inch monochrome ePaper display

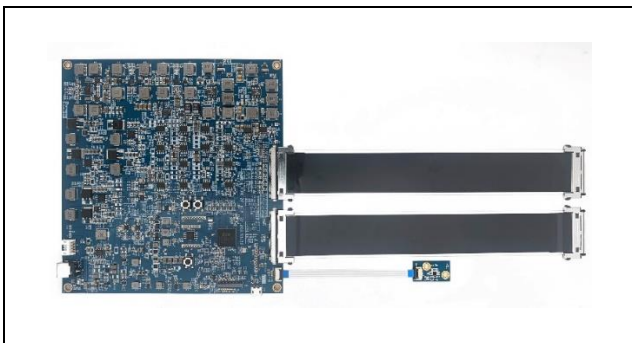


28" monochrome ePaper display

## 2 Hardware Setup Guide

This section describes the hardware setup procedures of the Luvia evaluation kit for 28" monochrome ePaper display.

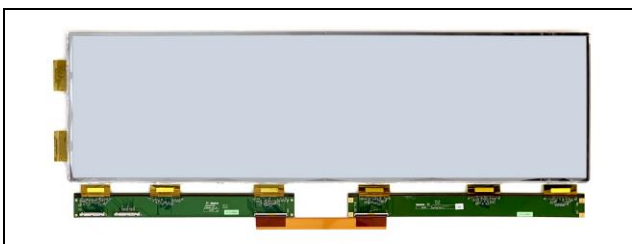
### (1) Hardware requirements for drive 28" monochrome ePaper display



Luvia evaluation kit



Windows PC (Prepare by customer)



28" EPD panel

**(2) Table 1 Minimum PC Requirements (Prepare by customer)**

<b>CPU</b>	<b>Pentium III 800 MHz or higher</b>
<b>RAM</b>	<b>128MB or higher</b>
<b>Required Software</b>	<b>Windows 7 or higher version</b>
<b>Interface</b>	<b>USB port</b>

**(3) Connect method of Luvia kit with 28" monochrome ePaper display**

Connect the Luvia evaluation board with 28" ePaper display is shown as following figure 2.1.

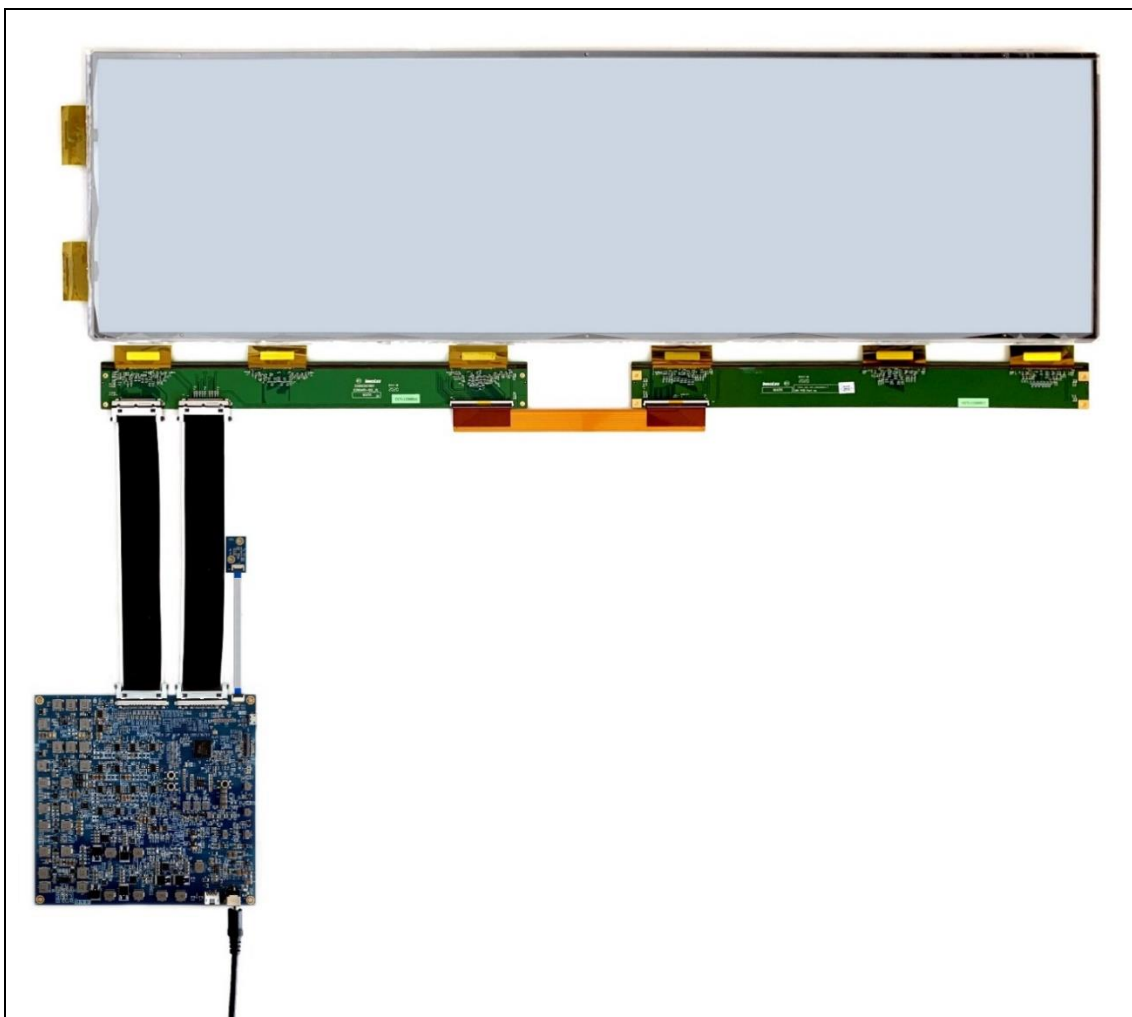


Figure 2.1

### 3 How to Demo the Picture

#### (1) Recommend picture format

The picture is recommend in BMP (24bit) or JPG (24bit) format and size needs to fit the resolution of 28" ePaper display (3840\*1080).

#### (2) Operating procedures

##### Make sure Luvia kit and 28" EPD as well as PC are connected

- A. Connect the 28-inch ePaper display to the Luvia evaluation kit (refer to Figure 2.1)
- B. The PC is connected to the Luvia evaluation kit via a Micro-USB cable.
- C. Execute the "T1000\_Windows\_AP.exe" software and click the "Connect" button to ensure that the software is successfully connected to the physical drive. (refer to Figure 3.1)

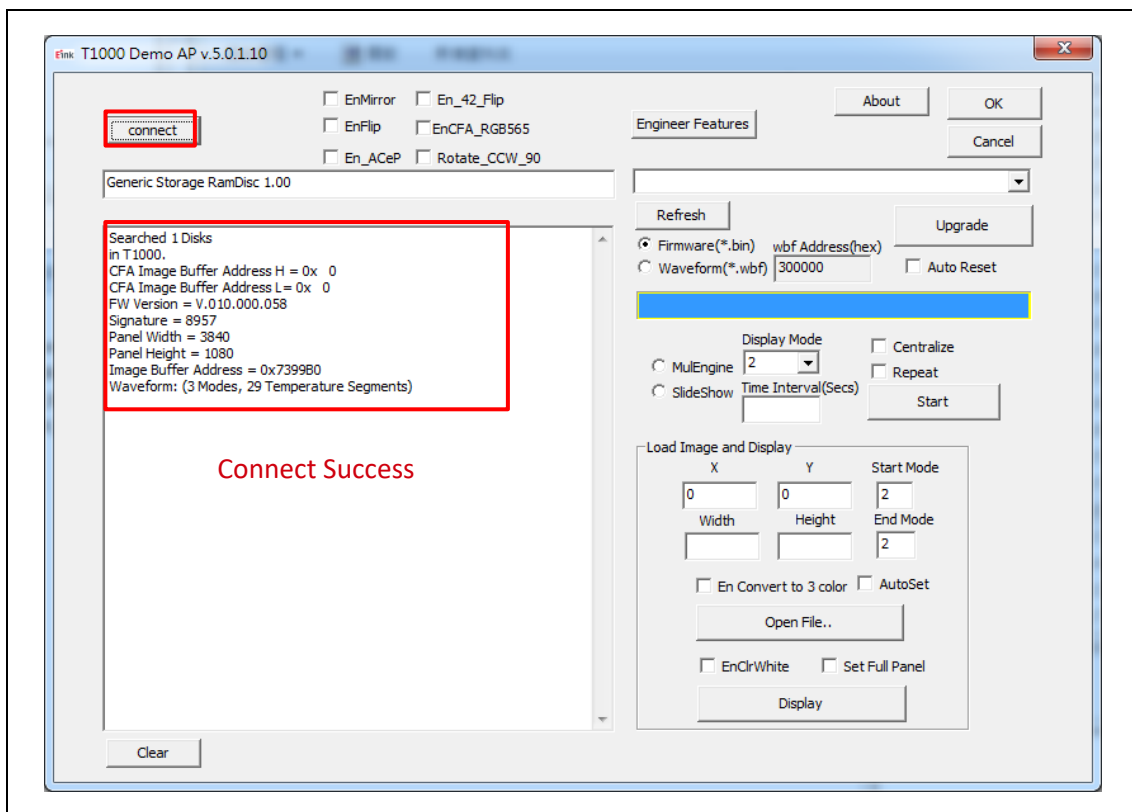


Figure 3.1

##### Update picture to ePaper display

- A. Execute T1000 Demo AP (refer to Figure 3.2)
  - Enable "AutoSet" and "Set full Panel" (step 1&2)



- Click “Open File..” to choose the picture (step 3&4)
- Set “Start mode” and “End mode” to 3 (step 5)
- Click “ Display” button to show selected picture on ePaper display (step 6)

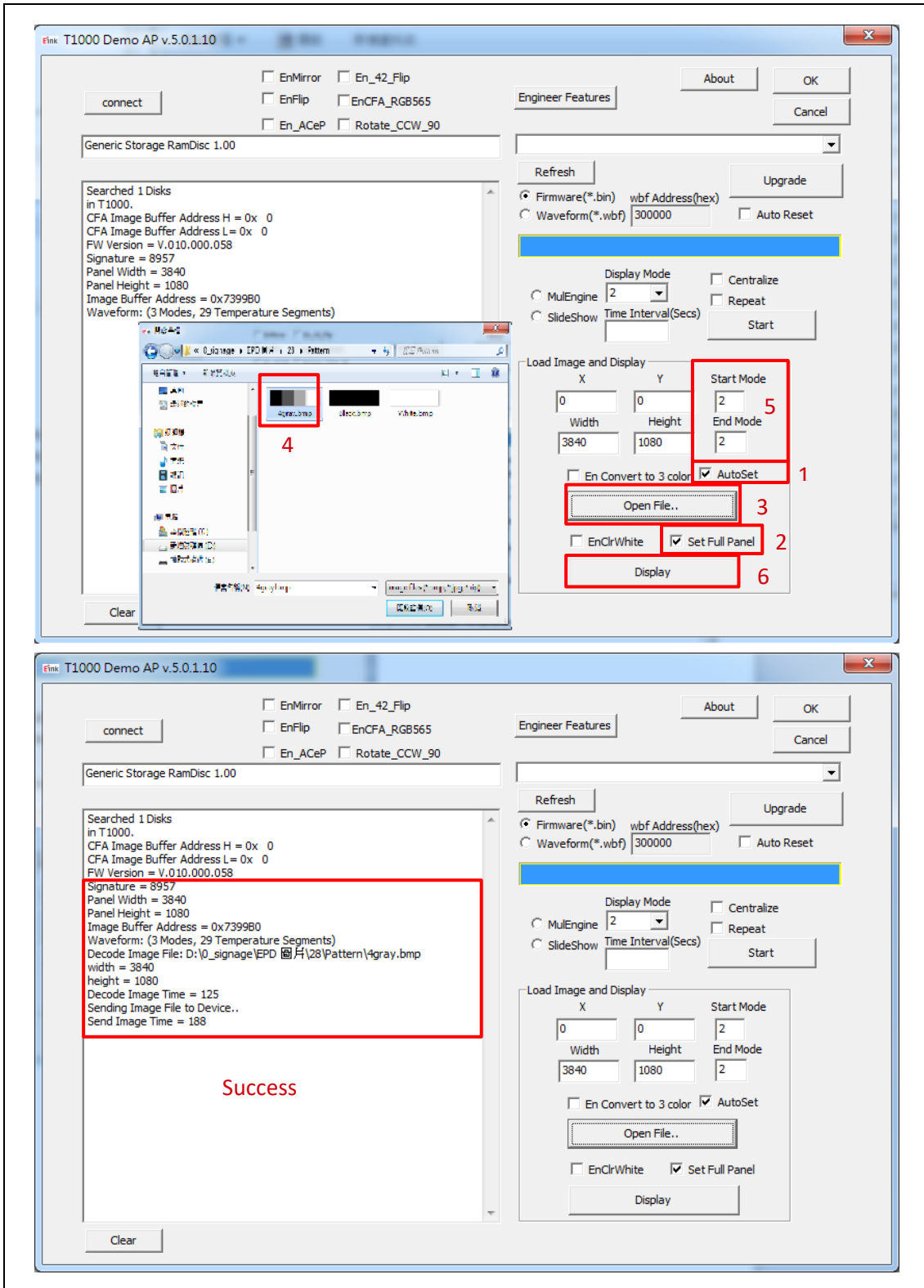


Figure 3.2 Update picture to 28" ePaper display

## Appendix:

### A. How to minimize artifact

- Execute T1000 Demo AP(refer to Fig 3.3)
- Select “EnClrWhite” option
- Set “Start mode” and “End mode” to 0,
- Click “Display” button. ePaper display will show white picture. Repeat above steps if necessary. Unselect “EnClrWhite” option after done with minimizing artifact.

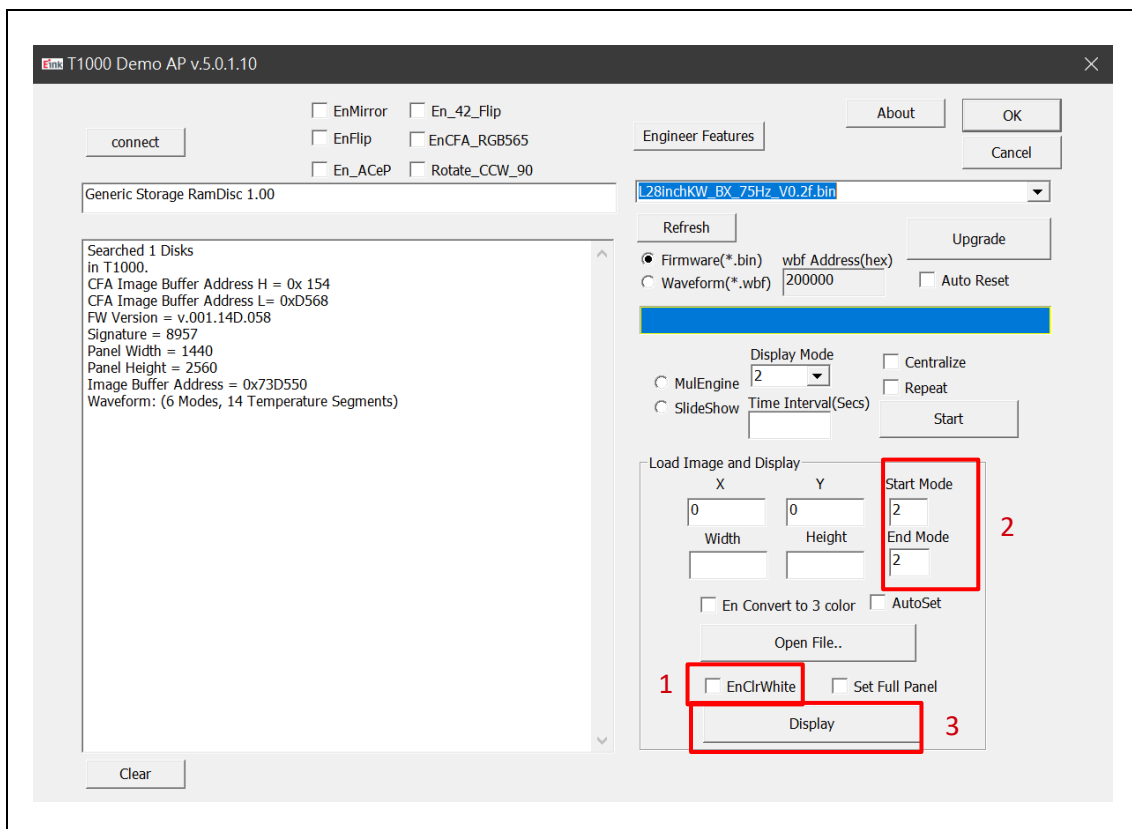


Figure 3.3

### B. How to upgrade firmware

- Execute T1000 Demo AP(refer to Figure 3.4)
- Click the “connect” button (step 1)
- Choose “Firmware(\*.bin) (step 2)
- Click “Refresh” and “choose the FW you want to use. (step 3&4)
- Click “ Upgrade” (step 5)
- If update is success, please re-plug the power adapter and USB cable (reset)



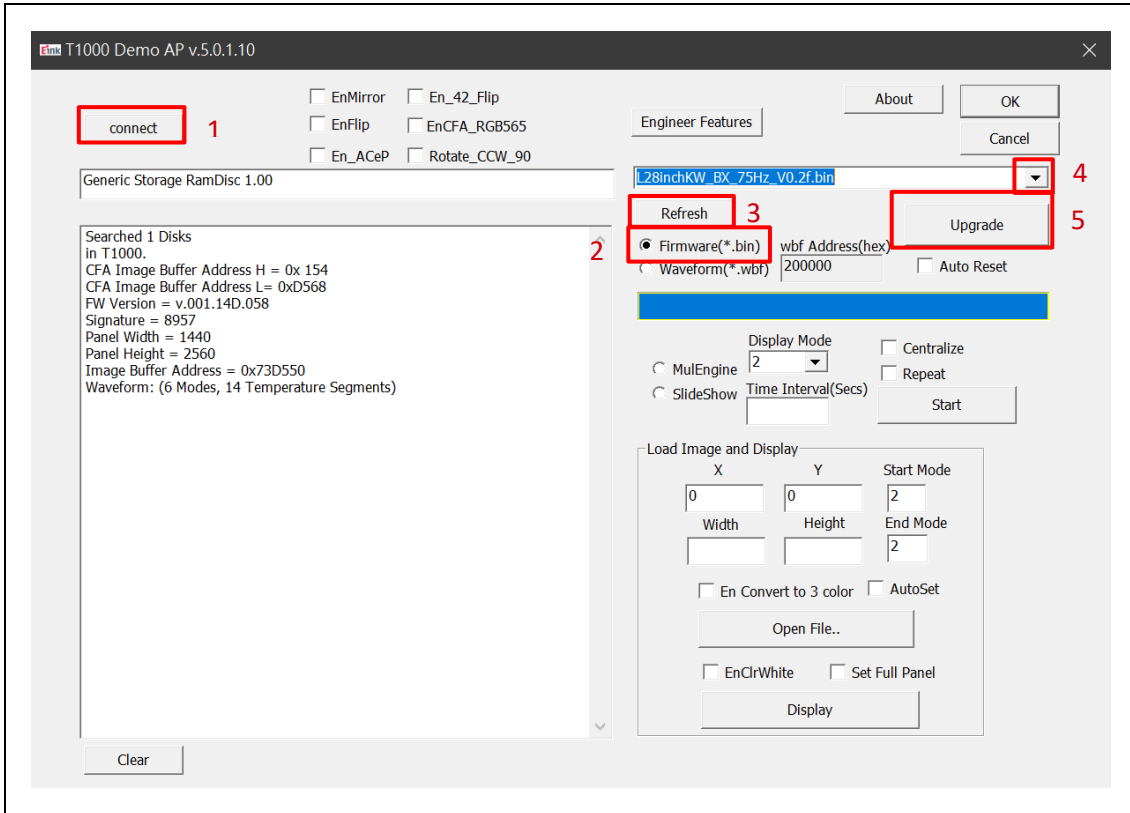


Figure 3.4

C. How to upgrade waveform

- Execute T1000 Demo AP(refer to Figure 3.5)
- Click the “connect” button (step 1)
- Choose “Firmware(\*.bin) (step 2)
- Click “Refresh” and “choose the FW you want to use. (step 3&4)
- Click “ Upgrade” (step 5)
- If update is success, please re-plug the power adapter and USB cable(reset)

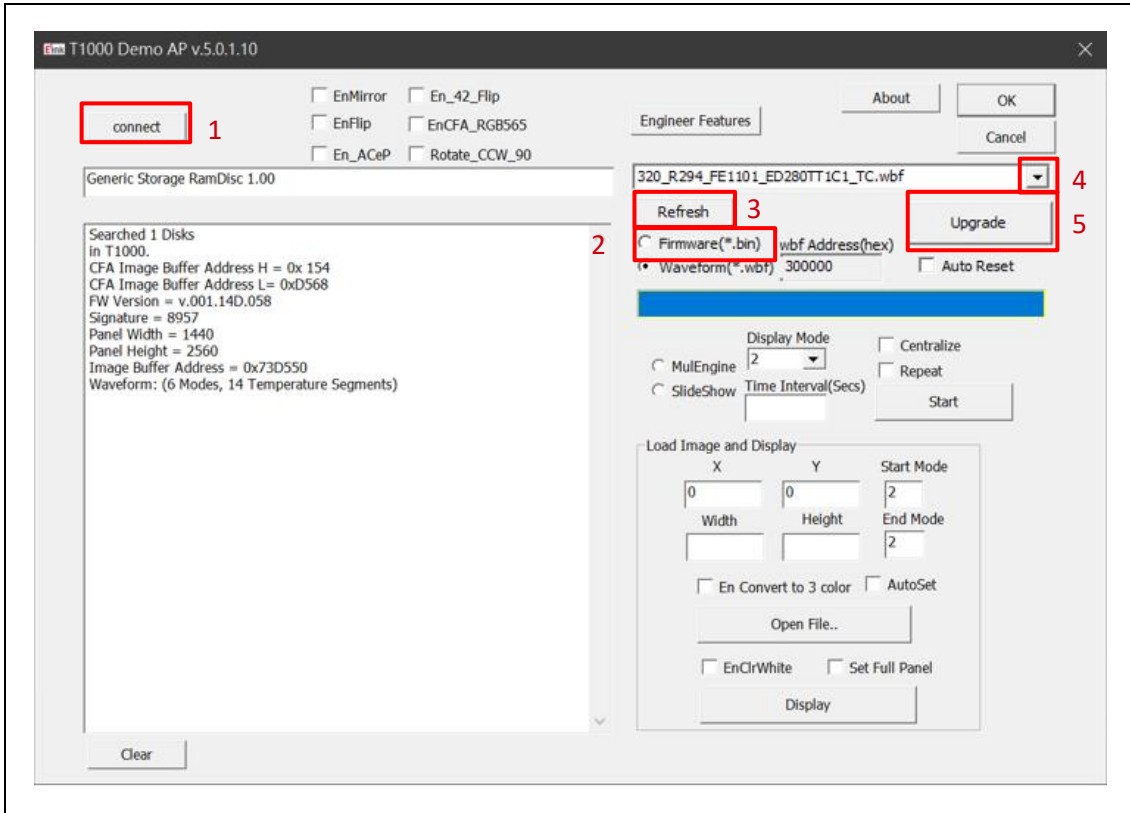


Figure 3.5

#### D. How to slideshow

- Execute T1000 Demo AP(refer to Figure 3.6)
- Click the “connect” button (step 1)
- Upload all images under the folder name as “SlideShowImages”
- Set “Display Mode” and “Time Interval”
- Select “SlideShow” option and click “Start” button.

\* Note: If the T1000\_Demo\_AP.exe put in a Demo AP folder, the slideShowImages folder also needs under Demo AP folder.

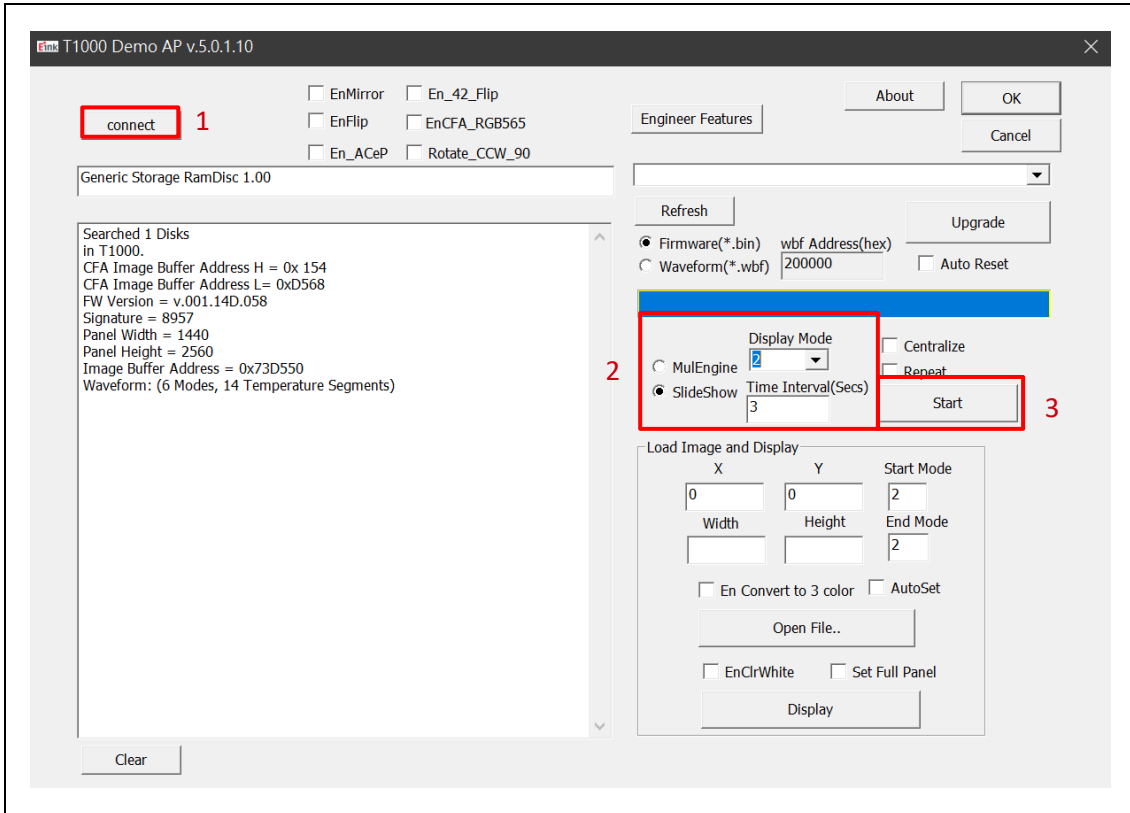


Figure 3.6

#### E. How to set VCOM & temperature

- Execute T1000 Demo AP (refer to Figure 3.7)
- Set Vcom
  - Click “Engineer Features “button
  - VCOM Set/Get
  - Set/Get VCOM voltage value.
  - Click “Execute” button to Set/Get VCOM.
  - Click “OK” button
- Set temperature
  - Click “Engineer Features “button
  - Temperature Set/Get
  - Set/Get temperature value.
  - Click “Execute” button to Set/Get temperature.
  - Click “OK” button

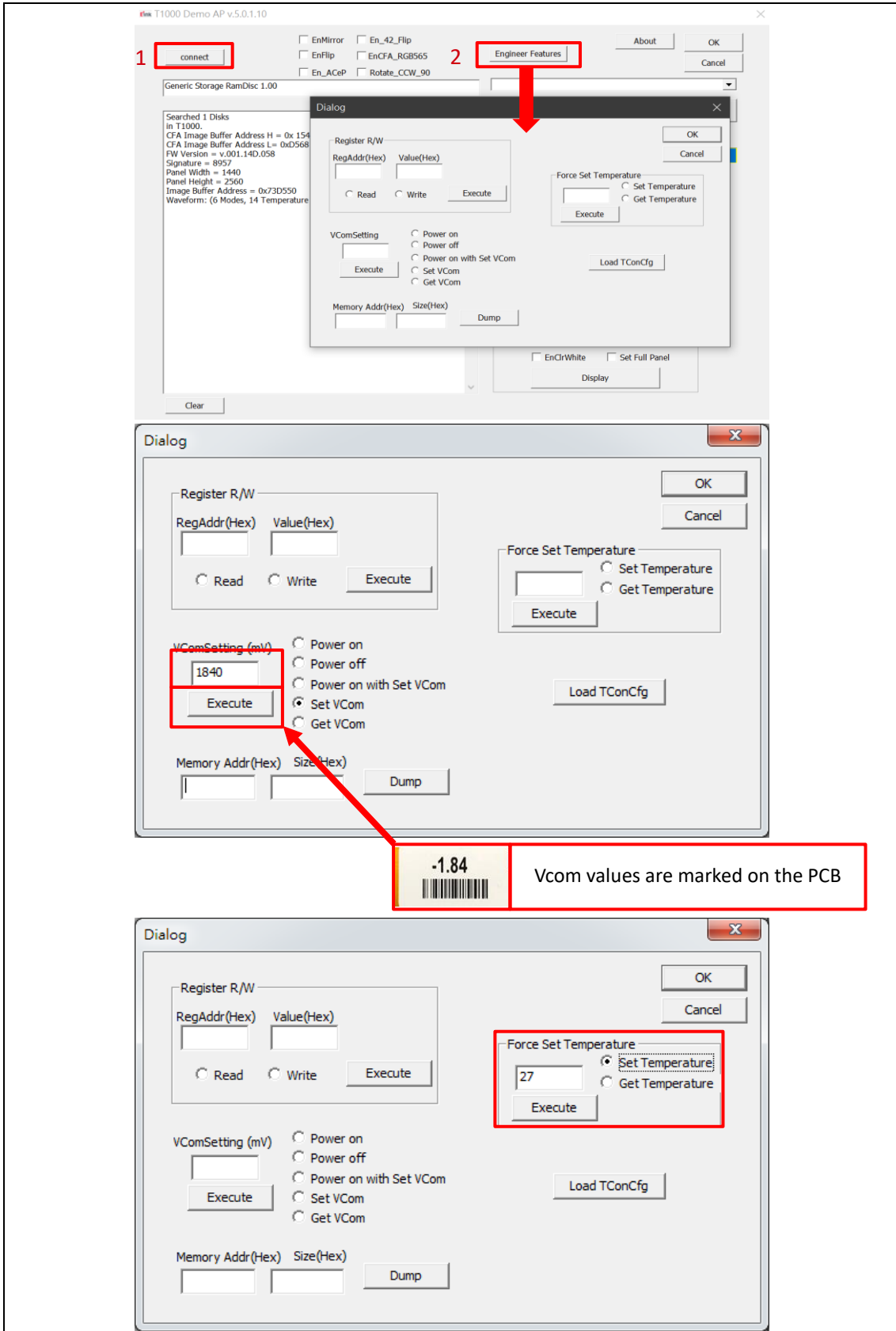


Figure 3.7

## F. Other Features Description for T1000\_Demo\_AP.exe

Each of the checkbox described above has to be selected before you load an image using “Open File” button based on different firmware.

- EnMirror : Mirror image (source line)
- EnFlip : Flip image (gate line)
- En\_42\_Flip : Only used in 42" EPD.
- EnCFA\_RGB565 : Only used in 31.2" CFA EPD.
- Rotate\_CCW\_90 : Only used in 31.2 BW and 31.2 CFA.

## 4 Troubleshooting

Below is a list of commonly asked questions and basic troubleshooting steps of L-T1000 evaluation board.

Table 4.1 Troubleshooting

No.	Issue	Possible Cause and Solution
1	L-T1000 device is not visible on PC	USB cable damage Replace USB cable.

## 5 Legal Information

- Definitions:

The document is a draft version only. The document is a draft version only. The content is still under internal review and subject to formal approval, which may result in modifications or additions. E-Ink does not give any representations or warranties as to the accuracy or completeness of information included herein and shall have no liability for the consequences of use of such information.

- Right to make changes:

E-Ink reserves the right to make changes to information published in this document, including without limitation specifications and product descriptions, at any time and without notice. This document supersedes and replaces all information supplied prior to the publication hereof.

- Suitability for use:

Product described in this document is intended for development purposes only and comes without any warranty. E-Ink accepts no liability for inclusion and/or use of E-Ink products in commercial products or applications and therefore such inclusion and/or use is at the customer's own risk. In no event shall E-Ink be liable for any direct, indirect, incidental, special, exemplary, or consequential damages (including, but not limited to, procurement of substitute goods or services; loss of use, data, or profits; or business interruption) however caused and on any theory of liability, arising in any way out of the use of the software.

- Applications:

Applications that are described herein for any of these products are for illustrative purposes only. E-Ink makes no representation or warranty that such applications will be suitable for the specified use without further testing or modification.

- No offer to sell or license:

Nothing in this document may be interpreted or construed as an offer to sell products that is open for acceptance or the grant, conveyance or implication of any license under any copyrights, patents or other industrial or intellectual property rights.

- Trademarks:

Notice: All referenced brands, product names, service names and trademarks are the property of their respective owners.